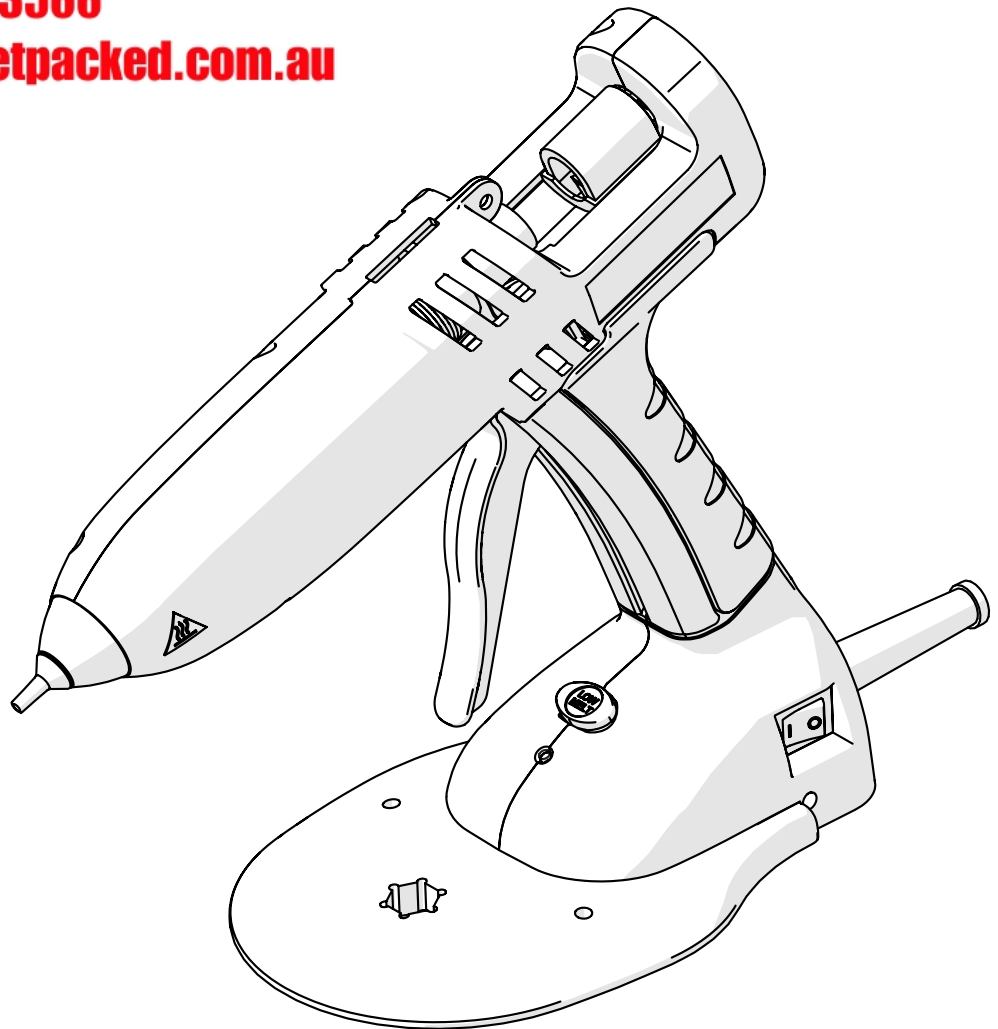




02 9452-3566

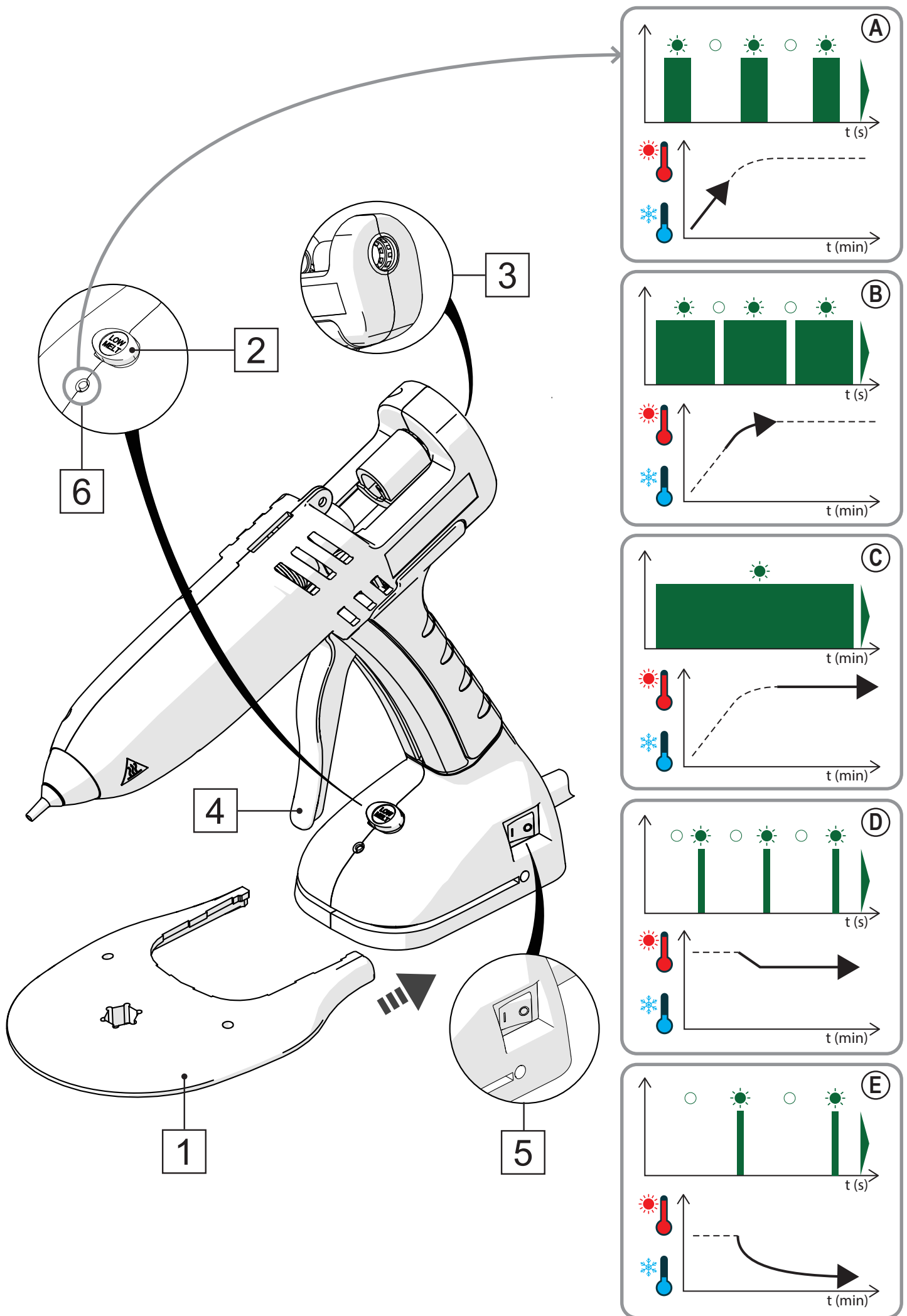
sales@getpacked.com.au



5-GLUEGTEC830

Operating Instructions Hotmelt Applicator

Please read carefully before
attempting operation



SAFETY INSTRUCTIONS

Do not touch the nozzle or molten adhesive with bare skin as they are hot - the operating temperature of this tool is approximately 200°C / 392°F, dependent on which pre-set plug-in temperature module is being used. Protective gloves should always be worn. Careless handling can cause skin burns. If molten adhesive comes into contact with the skin, immerse the affected area immediately in plenty of cold water. Seek medical advice if necessary. In addition to the safety instructions herein, any statutory regulations, local fire insurance regulations, or other generally valid "regulations for accident prevention" must be complied with when using this tool.

Repairs should only be undertaken by competent personnel with the adequate electrical knowledge. Before proceeding with any maintenance or repair operation, disconnect the tool from the mains electricity supply. If in doubt, contact your supplier.

Depending on the country this tool may be fitted with a polarised plug (one blade wider than the other). To reduce the risk of electric shock, such a plug is intended to fit a polarised outlet one way. If the plug does not fit fully into the outlet, reverse the plug. If it still does not fit, please contact the manufacturer or a qualified electrician. Do not attempt to modify the plug in any way.

WARNING: To reduce the risk of fire or electric shock, do not expose this tool to damp, rain or moisture, and do not immerse in water. Store indoors. Read instruction manual fully before using.

FOR INDOOR USE ONLY

- **WARNING** - This tool must be placed on its stand when not in use; do not leave the tool unattended when switched ON.
- Place the tool on its stand after use and allow it to cool down before storage.
- Never use the tool if it is damaged in any way. If the SUPPLY CORD is damaged, it must be replaced by the manufacturer, its service agent or similar qualified persons in order to avoid a hazard.
- This appliance can be used by children aged from 3 years and above and persons with reduced physical, sensory or mental capabilities or lack of experience and knowledge if they have been given supervision or instruction concerning use of the appliance in a safe way and understand the hazards involved and are supervised during use.
- Children should be supervised to ensure that they do not play with the appliance.
- Cleaning and user maintenance shall not be made by children.
- Keep the appliance and its cord out of reach of children less than 3 years.
- This tool is intended for use at altitudes NOT exceeding 2000m.
- Do not use this tool whilst under the influence of drugs or alcohol.

- Do not use this tool in the vicinity of any heat-sensitive materials, or any flammable materials, liquids, or gases, and do not apply to the same place for a long time.
- Only use extension cables with a wire cross-section of 1.5mm² / 16 a.w.g. and no more than 20m / 65 ft in length.
- Never pull on the tool's connecting cable.

AVOIDING PROBLEMS

- Ensure that tool has reached temperature before operating (see points 7 & 8 below).
- Never lay the tool on its side. Always use stand provided, the optional bench stand or the optional suspension unit.
- Only use adhesives designed for use with this tool.
- Never remove a partially used glue stick. This can lead to irreparable damage.
- Hotmelt glue can be used instead of nails, staples, tapes, and liquid glues. However they should not be used in place of structural connections when heavy loads are involved.
- Do not use hotmelt glue for objects that are exposed to extreme heat. Some glues that can be used in this tool will soften at 60°C (140°F).

Note: This tool has automatic standby and shutdown features, which when not in use progressively reduce the tool's temperature.

Do not connect to the main supply at this point!

1. Attach the tool stand 1
2. Ensure appropriate module is located in its socket 2
3. Load the tool by inserting an adhesive stick into the rear 3
4. Operate the trigger to push adhesive forward 4
5. Connect to main supply and switch on tool 5
6. Green light flashes whilst tool warms up and stops flashing when set temperature is reached 6
7. Tool may take approx 5 minutes to fully heat up
8. Operate the trigger to extrude adhesive until the stick has been completely drawn into the rear of the tool 4
9. Insert a new stick into the tool 3
10. Switch off tool and disconnect from the mains supply 5

How to change tool temperature

11. Switch off tool and disconnect from the mains supply 5
12. Remove factory fitted module (195°C/380°F) by pulling it from its socket. 2
13. Replace with required temperature module, push module into socket. 2
14. Connect to main supply and switch on tool 5

Temperature modules

Lowmelt - AED081	160°C/320°F - AED082
180°C/350°F - AED083	195°C/380°F - AED084
205°C/400°F - AED083	215°C/420°F - AED084

TOOL OPERATION NOTES

- 1. Precision temperature control** - The tool's intelligent digital controller allows operators to select the optimum operating temperature to precisely match the particular characteristics of the adhesive being dispensed via a choice of plug-in temperature modules.
- 2. Rapid heat up** - The tool precisely controls the heater power to reach the correct operating temperature as quickly as possible.
- 3. Power boost** - The tool benefits from power boost functionality, increasing the heater power whilst the trigger is pulled for those more demanding applications.
- 4. Self-test function** - The tool checks itself for a number of different possible faults after switch-on, before it begins to heat up (and also during normal operation). If a recognised fault is detected, the tool's heating system will be safely disabled. Also, the green indicator light will repeatedly flash a coded sequence, identifying the fault-type detected.
- 5. Low-energy/standby mode** - The tool detects extended periods of non-use, during which it will begin to progressively reduce the tool's temperature to conserve energy. After a period of 2 hours non-use, the tool will switch off heating completely. Simply pulling the trigger will reset the tool, and it will begin to heat up as normal.

GREEN LIGHT INDICATIONS

- (A) Regular fast flashing** (1 flash approx. every second), 50% ON, 50% OFF.
Initial Warming Up - The tool is not yet hot enough to be used, please wait (typically 3-4 minutes if the tool is cold).
- (B) Regular fast flashing** (1 flash approx. every second), 90% ON, 10% OFF.
Final Warming Up - The tool is almost at the correct temperature, and it is possible to begin using. Typically it will take a further 1-2 minutes before the tool is at full temperature.
- (C) Indicator Fully On** - The tool is at the correct temperature and may be used.
- (D) Regular Slow Flashing** (1 flash approx. every 2 seconds), 33% ON, 67% OFF.
Initial Standby - The tool has begun to drop its temperature. Pulling the trigger will reset the tool and it will begin to heat up as normal.
- (E) Regular Very Slow Flashing** (1 flash approx. every 5 seconds), 10% ON, 90% OFF.
Extended Standby - The tool has been standing unused for at least two hours, and may be completely cold. Pulling the trigger will reset the tool and it will begin to heat up as normal.
- F Double Flash Then Off For 3-4 Seconds**
Fault Type #1 detected - The controller has detected that there is no plug-in module present, or it is open-circuit.

G Triple Flash Then Off For 3-4 Seconds

Fault Type #2 detected - The controller has detected that there is an unrecognised plug-in module present.

H Quadruple Flash Then Off For 3-4 Seconds

Fault Type #3 detected - The controller has detected a heating system fault. The heating system comprises the heater, the thermistor (temperature sensor), the circuit board, and the interconnections between these components.

GUARANTEE AND REPAIRS

This tool is guaranteed against faulty workmanship and materials for a period of 12 months from the date of purchase. Within this warranty period the manufacturers undertake, at their discretion, to either repair or replace any tool proved to be defective (proof of purchase will be required for verification). This guarantee is invalidated if the tool is opened, or modified in any way, or if adhesive formulations other than those supplied by the tool's manufacturer are used. Warranty claims attributable to improper, or careless, use or handling, and to normal wear, are excluded from this guarantee. The supplier's and manufacturer's only obligation shall be to replace such tools that are proved to be defective. Neither supplier nor manufacturer shall be liable for any injury, loss or damage, direct or consequential, arising out of the use, or the inability to use, this tool. The user shall determine the suitability of this product for its intended use, and the user assumes all risks and liability whatsoever in connection therewith.

The manufacturer reserves the right to improve or modify this product without prior notice.

For help with fault finding, and for optional parts, please visit our website:

www.getpacked.com.au



Do not dispose of electrical appliances as unsorted municipal waste, use separate collection facilities. Contact your authority for information regarding the collection systems available. If electrical appliances are disposed of in landfill or dumps, hazardous substances can leak into the groundwater and get into the food chain, or the flora and fauna can be poisoned for years during the weathering. When replacing old appliances with new ones, the retailer is legally obliged to take them back for disposal at least, free of charge.

